



# Retail Price List

1<sup>st</sup> September 2021 to 30<sup>th</sup> June 2022

Version 1



**Nutrient  
Advantage<sup>®</sup>**

# Service Information



## NUTRIENT ADVANTAGE

Nutrient Advantage is one of the largest providers of soil, plant tissue, water, compost and manure nutrient testing services in Australia. Since 1963, it has supplied specialist testing services and evidence based agronomic advice to meet the needs of researchers, advisors, consultants and growers within the Australian agriculture and environmental sectors.

Renowned across the industry for its experience, focus on quality, customer service, consistent and rapid turn-around time, a broad and flexible range of tests to choose from, and advanced agronomic decision support software, Nutrient Advantage is ready to help you meet your testing needs.

## EXCELLENT CUSTOMER SERVICE

Friendly, experienced and dedicated staff are available to guide you through each part of your Nutrient Advantage experience. Supported by dedicated agronomists, analytical chemists and IT specialists, email or call for a solution for your testing needs, request supplies, or promptly solve any issue.

## FAST SERVICE DELIVERY

Nutrient Advantage is celebrated for its consistency in delivering correct results, first time, on-time. Utilising a large laboratory testing capacity and full-time staff compliment, we can ensure your work is completed to schedule regardless of the size of your sample submission or the time of year.

Along with our uncompromising approach to quality, it is our capacity and turn-around time consistency which makes us the preferred testing provider for consultants with rapid service needs, and large government and university projects.

## EXTERNALLY ASSESSED QUALITY ASSURANCE

Nutrient Advantage Laboratory Services is one of the few Australian soil and plant tissue nutrient testing laboratories independently verified by 3<sup>rd</sup> parties for accuracy and traceability to Australian and international standards. Both NATA accredited and ASPAC certified for most of the soil and plant tissue tests offered, you can have confidence in our credible and validated test results.



The National Association of Testing Authorities (NATA) uses leading agricultural laboratory scientists and professional auditors to independently audit the laboratory, our staff, Quality System and applied Test Methods for compliance to the AS/ISO 17025 standard for laboratory quality and traceability. Review the comprehensive scope of tests that NATA have accredited Nutrient Advantage for at:

[www.nata.com.au](http://www.nata.com.au)



Nutrient Advantage is a founding member of the Australasian Soil and Plant Analysis Council (ASPAC). ASPAC operates a soil and plant tissue proficiency testing program to certify laboratories for accurate results in participating test methods. We invite you to review our extensive range of certified at: [www.aspac-australasia.com](http://www.aspac-australasia.com)

Professional, qualified chemists are employed and trained to analyse your samples with expertise and integrity. Nutrient Advantage procedures are designed to provide the most reliable and defensible, fit for purpose analytical results.

## TESTING FLEXIBILITY

This price list includes commonly requested test methods packaged into “test codes”, designed to assist your testing selection when submitting samples. If you prefer an alternative suite of tests for your samples, please request a quotation. Discounts are available for large submissions.

## REPORTING FLEXIBILITY

Nutrient Advantage offers many reporting options, including NATA endorsed reports of test results, and low formatted .csv files of test results for importation in to MS Excel® or your database.

Where crop information is available, we can also provide agronomic crop optimal nutrient ranges, nutrient application requirements and sustainable fertiliser recommendations.

## LabSTREAM®

LabSTREAM® is an innovation for sampling soil and plant tissue. Designed by experienced soil samplers, the intuitive app helps users submit samples quickly and easily, on the go.

- ✓ Paperless sample submissions
- ✓ Scan sample bag barcodes using your device camera
- ✓ Record up to 20 GPS points per sample
- ✓ Fast crop information entries using “Easy Recs”
- ✓ Android and Apple compatible
- ✓ Operate online, or offline and synchronise data when network availability returns.



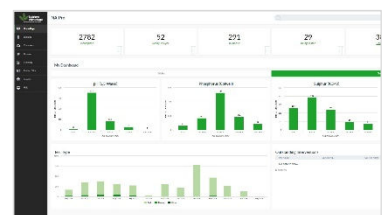
## NUTRIENT ADVANTAGE PRO®

Nutrient Advantage makes available world leading advisory software to trained users for the agronomic interpretation of soil, plant tissue and water sample results and development of sustainable nutrient application recommendations.



Assessed and accredited by Fertcare®, the fully redesigned Nutrient Advantage Pro® provides both optimal test ranges and nutrient application recommendations based on an up-to-date and extensive library of independent Australian agronomy ‘rules logic’ and agronomy expertise, supported by our industry leading technical agronomists.

Logging samples online in any browser and receiving results directly from the Nutrient Advantage laboratory, trained agronomic advisors can tailor their client’s recommended nutrient requirements and applications taking into consideration individual growers farming practices, paddock history and local knowledge.



For more information, sampling instructions, testing methodology details and sample submission assistance please visit our website: [www.nutrientadvantage.com.au](http://www.nutrientadvantage.com.au), or contact Nutrient Advantage on 1800 803 453.

# Nutrient Advantage Price List

1<sup>st</sup> September 2021 to 30<sup>th</sup> June 2022 (version 1)



## Fees & Services

Additional fees and services to test code prices (as applicable)	Price GST excl.	Price GST incl.
Data Entry per sample within Nutrient Advantage Pro <sup>®</sup> software (if completed by the Laboratory)	\$5.00	\$5.50
Complete Fertiliser Recommendations through Nutrient Advantage Pro <sup>®</sup> , including (per sample):		
<ul style="list-style-type: none"> <li>Laboratory Results</li> <li>Optimal Nutrient Ranges (where agronomic charts are available)</li> <li>Nutrient Requirements and Fertiliser Application Rates</li> <li>Fertcare<sup>®</sup> Accredited Advisor Comments</li> </ul>	\$55.00	\$60.50
Note: This premium recommendation service may add several days to the results only service.		

## COMPOSTED AND ORGANIC SOLID MATERIALS ANALYSIS



Minimum of 300g of sample required.

Double bag and label contents for safe transport and handling, e.g. "composted chicken manure" or "sugar mill ash".

Samples are dried at 70°C and milled. Liquid fertiliser and liquid manure samples are advised use the Water Analysis Test Code C3.

We do not offer suitable tests for inorganic solid fertilisers, liming materials, gypsum or rock.

Test Code	Composts & Organic Fertilisers		Sugarcane Mill Mud & Mill Ash	
	MC1	MC2	MM1	MM2
Moisture & Dry Matter (at 70°C)	✓	✓	✓	✓
pH (1:5 water) & Electrical Conductivity (1:5 water)	✓	✓	✓	✓
<b>Water Soluble:</b> Ammonium, Nitrate, Chloride, Boron, Calcium, Copper, Iron, Magnesium, Manganese, Molybdenum, Potassium, Sodium, Sulphur, Zinc (1:5 water)	✓	✓		✓
<b>Total:</b> Carbon, Nitrogen, C:N ratio (Combustion)	✓	✓	✓	✓
<b>Total:</b> Boron, Calcium, Copper, Iron, Magnesium, Manganese, Phosphorus, Potassium, Sodium, Sulphur, Zinc (ICP-OES)	✓	✓	✓	✓
<b>Total:</b> Arsenic, Cadmium, Chromium, Cobalt, Lead, Molybdenum, Nickel, Selenium, Titanium, Vanadium (ICP-MS)		✓		
Total Coliforms and E. Coli (MPN)		✓		
Faecal Coliforms (Thermotolerant, MPN)		✓		
Phosphorus (Colwell)				✓
Phosphorus (H <sub>2</sub> SO <sub>4</sub> , BSES) & Silicon (H <sub>2</sub> SO <sub>4</sub> , BSES)				✓
Price (GST excl.)	\$84.00	\$182.00	\$58.00	\$100.00
Price (GST incl.)	\$92.40	\$200.20	\$63.80	\$110.00

Additional organic material tests may be added to any Test Code when ordering, e.g. "MC1 + Faecal Coliforms", or contact us for a free customised test code. Individual tests requested without a Test Code incur a submission & sample preparation fee of \$10 per sample.

Additional Organic Material tests	Price GST excl	Price GST incl
<b>Total:</b> Molybdenum, Cobalt, Selenium, Arsenic, Cadmium, Chromium, Lead, Nickel, Titanium, Vanadium (ICP-MS)	\$28.00	\$30.80
Total Coliforms and E. Coli (MPN)	\$35.00	\$38.50
Faecal Coliforms (Thermotolerant, MPN)	\$35.00	\$38.50



# Nutrient Advantage Price List

1<sup>st</sup> September 2021 to 30<sup>th</sup> June 2022 (version 1)



## PLANT TISSUE & GRAIN ANALYSIS



Plant tissue & grain lab results are usually reported within 3 working days from receipt.

Trace elements are analysed by ICP Mass Spectrometer to assess low-level plant tissue agronomic critical limits.

Test Code	Plant Tissue							Grain G1
	PT1	PT2	PT3	PT4	PT6	PT7		
Nitrate, Ammonium, Chloride			✓	✓	✓	✓		
Boron, Calcium, Copper, Iron, Magnesium, Manganese, Phosphorus, Potassium, Sodium, Sulphur, Zinc	✓	✓	✓	✓	✓	✓	✓	
Nitrogen (Combustion)	✓	✓	✓	✓	✓	✓		
Nitrogen (Kjeldahl)							✓	
Molybdenum		✓		✓	✓	✓		
Cobalt, Selenium					✓	✓		
Arsenic, Cadmium, Chromium, Lead, Nickel, Titanium, Vanadium						✓		
1000 grain weight							✓	
Moisture							✓	
<b>Calculations (Nutrient Removed per 1 tonne/hectare Yield):</b> Boron, Calcium, Copper, Iron, Magnesium, Manganese, Phosphorus, Potassium, Sodium, Sulphur, Zinc, Nitrogen							✓	
<b>Calculations:</b> Seed Zinc content, Seed Phosphorus content (Seed optimal ranges for wheat only)							✓	
Price (GST excl.)	\$33.00	\$44.00	\$41.00	\$52.00	\$60.00	\$69.00	\$41.00	
Price (GST incl.)	\$36.30	\$48.40	\$45.10	\$57.20	\$66.00	\$75.90	\$45.10	

Additional plant tests may be added to any Test Code when ordering, e.g. "PT4 + Moisture", or contact us for a free customised test code. Individual tests requested without a Test Code incur a submission & sample preparation fee of \$10 per sample.

Additional Plant Tissue or Grain tests	Price GST excl	Price GST incl
Plant leaf washing before analysis	\$4.00	\$4.40
Moisture & Dry Matter (at 70°C)	\$4.00	\$4.40
Nitrate, Ammonium, Chloride (water soluble)	\$8.00	\$8.80
Boron, Calcium, Copper, Iron, Magnesium, Manganese, Phosphorus, Potassium, Sodium, Sulphur, Zinc (ICP-OES)	\$10.00	\$11.00
Molybdenum (ICP-MS)	\$11.00	\$12.10
Molybdenum, Cobalt, Selenium (ICP-MS)	\$19.00	\$20.90
Molybdenum, Cobalt, Selenium, Arsenic, Cadmium, Chromium, Lead, Nickel, Titanium, Vanadium (ICP-MS)	\$28.00	\$30.80
Total Nitrogen (Kjeldahl digestion)	\$13.00	\$14.30
Total Nitrogen (Combustion)	\$13.00	\$14.30
Total Carbon (Combustion)	\$13.00	\$14.30
Total Silicon	\$13.00	\$14.30
1000 grain weight (seeds or grain only)	\$4.00	\$4.40

# Nutrient Advantage Price List

1<sup>st</sup> September 2021 to 30<sup>th</sup> June 2022 (version 1)



## WATER ANALYSIS



Minimum of 500mL of sample required.

We recommend filling bottles to the brim to remove air and reduce expansion during transport.

Coliforms testing requires sampling with a sterile bottle and should be sent within 24 hours.

No samples containing human effluent will be accepted.

Test Code	Water samples	Fertilisers & Waste
	C1	C3
pH, Electrical Conductivity, Carbonate, Bicarbonate, Total Alkalinity	✓	✓
Aluminium, Boron, Calcium, Copper, Iron, Magnesium, Manganese, Phosphorus, Potassium, Sodium, Sulphur, Zinc	✓	✓
Ammonium, Nitrate, Chloride	✓	✓
<b>Calculations:</b> Sodium Adsorption Ratio, Total Dissolved Salts	✓	✓
<b>Calculations:</b> Water Hardness, Residual Sodium Carbonate, Calcium Carbonate Saturation Index, Salinity & Sodicity Class	✓	
Total Nitrogen (TKN)		✓
Total Aluminium, Boron, Cadmium, Calcium, Cobalt, Copper, Iron, Lead, Magnesium, Manganese, Molybdenum, Phosphorus, Potassium, Sodium, Sulphur, Zinc (acid digestion)		✓
	Price (GST excl.)	\$50.00
	Price (GST incl.)	\$96.00
		\$55.00
		\$105.60

Additional water tests may be added to any Test Code when ordering, e.g. "C3 + Specific Gravity", or contact us for a free customised test code. Individual tests requested without a Test Code will incur a submission & sample preparation fee of \$10 per sample.

Additional Water Tests (add to existing Test Codes)	Volume required	Price GST excl	Price GST incl
Aluminium, Boron, Calcium, Copper, Iron, Magnesium, Manganese, Phosphorus, Potassium, Sodium, Sulphur, Zinc	50mL	\$12.00	\$13.20
Ammonium, Nitrate, Chloride	50mL	\$12.00	\$13.20
pH, Electrical Conductivity, Carbonate, Bicarbonate, Total Alkalinity	100mL	\$16.00	\$17.60
Total Nitrogen (TKN)	100mL	\$23.00	\$25.30
Total Aluminium, Boron, Cadmium, Calcium, Cobalt, Copper, Iron, Lead, Magnesium, Manganese, Molybdenum, Phosphorus, Potassium, Sodium, Sulphur, Zinc (acid digestion)	100mL	\$23.00	\$25.30
Total Coliforms and E. Coli (MPN)	100mL	\$35.00	\$38.50
Faecal Coliforms (Thermotolerant, MPN)	100mL	\$35.00	\$38.50
Specific Gravity (g/cm <sup>3</sup> )	100mL	\$5.00	\$5.50

# Nutrient Advantage Price List

1<sup>st</sup> September 2021 to 30<sup>th</sup> June 2022 (version 1)



## PASTURE SOIL ANALYSIS



Soil Test Codes are a suggestion and may be used interchangeably between industries or depths.

Additional tests listed on pages 10-11 can be added to Test Codes.

Contact us for a free customised test code if you use additional tests routinely or you prefer a unique test combination.

Test Code	Top Soil Packages						Sub Soil	
	E80	E81	E82	E83	E84	E85	E86	E87
Ammonium N, Nitrate N			✓	✓	✓	✓		
Phosphorus (Olsen)					✓	✓		
Phosphorus (Colwell)	✓	✓	✓	✓	✓	✓		✓
Phosphorus Buffer Index (PBI)	✓	✓	✓	✓	✓	✓		
Potassium (Colwell)	✓	✓	✓	✓	✓	✓		
Sulphur (KCl 40°C)	✓	✓	✓	✓	✓	✓		
Exchangeable Cations (Ca, K, Mg, Na, Al, CEC)			✓	✓	✓	✓		✓
Exchangeable Aluminium (KCl)		✓					✓	
pH (1:5 water) & pH (1:5 CaCl <sub>2</sub> )		✓	✓	✓	✓	✓	✓	✓
Electrical Conductivity (1:5 water)		✓	✓	✓	✓	✓	✓	✓
Chloride			✓	✓	✓	✓		
Organic Carbon (Walkley & Black)			✓	✓	✓	✓		
Texture (Hand Bolus) & Soil Colour			✓	✓	✓	✓		
Boron (hot CaCl <sub>2</sub> )				✓		✓		
Copper, Iron, Manganese & Zinc (DTPA)				✓		✓		
Price (GST excl.)	\$37.00	\$53.50	\$78.00	\$94.50	\$86.00	\$102.50	\$26.50	\$34.50
Price (GST incl.)	\$40.70	\$58.85	\$85.80	\$103.95	\$94.60	\$112.75	\$29.15	\$37.95



## Scientifically verified soil health.

Take soil nutrient testing to the next level.

Measure and monitor healthy soil indicators by adding the **HEALTH1** package on page 10 to any soil test code.

Solvita<sup>®</sup> CO<sub>2</sub>-burst microbial activity

Slaking & Dispersion

Labile Carbon

Total Carbon, Total Nitrogen & C:N ratio

# Nutrient Advantage Price List

1<sup>st</sup> September 2021 to 30<sup>th</sup> June 2022 (version 1)



## CROPPING SOIL ANALYSIS



Soil Test Codes are a suggestion and may be used interchangeably between industries or depths.

Additional tests listed on pages 10-11 can be added to Test Codes.

Contact us for a free customised test code if you use additional tests routinely or you prefer a unique test combination.

Test Code	Top Soil Packages								
	E11	E12	E13	E17	E31	E32	E33	E39	
Ammonium N, Nitrate N	✓	✓	✓	✓	✓	✓	✓	✓	
Phosphorus (Colwell)	✓	✓	✓	✓	✓	✓	✓	✓	
Phosphorus Buffer Index (PBI)	✓	✓	✓	✓	✓	✓	✓	✓	
Exchangeable Cations (Ca, K, Mg, Na, Al, CEC)	✓	✓	✓	✓	✓	✓	✓	✓	
Sulphur (KCl 40°C)	✓	✓	✓	✓					
Sulphur (MCP)					✓	✓	✓	✓	
pH (1:5 water) & pH (1:5 CaCl <sub>2</sub> )	✓	✓	✓	✓	✓	✓	✓	✓	
Electrical Conductivity (1:5 water)	✓	✓	✓	✓	✓	✓	✓	✓	
Chloride	✓	✓	✓	✓	✓	✓	✓	✓	
Organic Carbon (Walkley & Black)		✓	✓	✓		✓	✓	✓	
Texture (Hand Bolus) & Soil Colour		✓	✓	✓		✓	✓	✓	
Boron (hot CaCl <sub>2</sub> )			✓	✓			✓	✓	
Copper, Iron, Manganese & Zinc (DTPA)			✓	✓			✓	✓	
Silicon & Phosphorus (H <sub>2</sub> SO <sub>4</sub> , BSES)				✓		✓	✓	✓	
Silicon (CaCl <sub>2</sub> )				✓				✓	
Price (GST excl.)	\$58.50	\$75.00	\$91.50	\$104.50	\$58.50	\$83.00	\$99.50	\$104.50	
Price (GST incl.)	\$64.35	\$82.50	\$100.65	\$114.95	\$64.35	\$91.30	\$109.45	\$114.95	

Test Code	Deep Soil Packages					
	E14	E15	E18	E16	E37	E38
Ammonium N, Nitrate N	✓	✓	✓	✓	✓	✓
Chloride	✓	✓	✓	✓	✓	✓
Sulphur (KCl 40°C)		✓	✓	✓		
Sulphur (MCP)					✓	✓
pH (1:5 water) & pH (1:5 CaCl <sub>2</sub> )			✓	✓		✓
Electrical Conductivity (1:5 water)			✓	✓		✓
Texture (Hand Bolus) & Soil Colour				✓		✓
Boron (hot CaCl <sub>2</sub> )				✓		
Moisture (at 105°C)				✓		✓
Price (GST excl.)	\$18.00	\$26.00	\$34.00	\$54.50	\$26.00	\$46.00
Price (GST incl.)	\$19.80	\$28.60	\$37.40	\$59.95	\$28.60	\$50.60



# Nutrient Advantage Price List

1<sup>st</sup> September 2021 to 30<sup>th</sup> June 2022 (version 1)



## HORTICULTURE SOIL ANALYSIS



Soil Test Codes are a suggestion and may be used interchangeably between industries or depths.

Additional tests listed on pages 10-11 can be added to Test Codes.

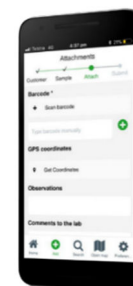
Contact us for a free customised test code if you use additional tests routinely or you prefer a unique test combination.

Test Code	Top Soil Packages			Sub Soil Packages	
	E71	E72	E73	E74	E75
Ammonium N, Nitrate N	✓	✓	✓	✓	✓
Phosphorus (Olsen)			✓		
Phosphorus (Colwell)	✓	✓	✓		
Phosphorus Buffer Index (PBI)	✓	✓	✓		
Exchangeable Cations (Ca, K, Mg, Na, Al, CEC)	✓	✓	✓	✓	✓
Sulphur (KCl 40°C)	✓		✓		
Sulphur (MCP)		✓			
pH (1:5 water) & pH (1:5 CaCl <sub>2</sub> )	✓	✓	✓	✓	✓
Electrical Conductivity (1:5 water)	✓	✓	✓	✓	✓
Chloride	✓	✓	✓	✓	✓
Organic Carbon (Walkley & Black)	✓	✓	✓		
Texture (Hand Bolus) & Soil Colour	✓	✓	✓		✓
Boron (hot CaCl <sub>2</sub> )	✓	✓	✓		
Copper, Iron, Manganese & Zinc (DTPA)	✓	✓	✓		
Silicon & Phosphorus (H <sub>2</sub> SO <sub>4</sub> , BSES)	✓	✓	✓		
Silicon (CaCl <sub>2</sub> )	✓	✓	✓		
Buffer pH (lime requirement)					✓
Price (GST excl.)	\$104.50	\$104.50	\$112.50	\$34.50	\$56.00
Price (GST incl.)	\$114.95	\$114.95	\$123.75	\$37.95	\$61.60



**LabSTREAM®**

**MOBILE AND RAPID  
SUBMISSION OF SOIL AND  
PLANT SAMPLES WITHOUT  
PAPERWORK**





# Nutrient Advantage Price List

1<sup>st</sup> September 2021 to 30<sup>th</sup> June 2022 (version 1)



## SUGARCANE SOIL ANALYSIS



Soil Test Codes are a suggestion and may be used interchangeably between industries or depths.

Additional tests listed on pages 10-11 can be added to Test Codes.

Contact us for a free customised test code if you use additional tests routinely or you prefer a unique test combination.

Test Code	Top Soil Packages		
	E41	E42	E43
Silicon & Phosphorus (H <sub>2</sub> SO <sub>4</sub> , BSES)	✓	✓	✓
Silicon (CaCl <sub>2</sub> )	✓	✓	✓
Phosphorus (Colwell)	✓	✓	✓
Phosphorus Buffer Index (PBI)	✓	✓	✓
Potassium (Nitric)	✓	✓	✓
Exchangeable Cations (Ca, K, Mg, Na, Al, CEC)	✓	✓	✓
Sulphur (MCP)	✓	✓	✓
pH (1:5 water) & pH (1:5 CaCl <sub>2</sub> )	✓	✓	✓
Electrical Conductivity (1:5 water)	✓	✓	✓
Organic Carbon (Walkley & Black)	✓	✓	✓
Texture (Hand Bolus) and Soil Colour	✓	✓	✓
Copper, Iron, Manganese, Zinc (DTPA)		✓	✓
Zinc (HCl)		✓	✓
Chloride			✓
Buffer pH (lime requirement)			✓
Ammonium N, Nitrate N			✓
Price (GST excl.)	\$88.00	\$104.00	\$125.50
Price (GST incl.)	\$96.80	\$114.40	\$138.05

## Test your soil health today, Farm Forever.



Refine your sustainable farm management practice with periodic addition of **HEALTH1** to any soil nutritional Test Code.

Monitor essential soil health indicators:

- microbial respiration activity
- key carbon fractions
- nitrogen mineralisation and immobilisation
- soil aggregation and structure

# Nutrient Advantage Price List

1<sup>st</sup> September 2021 to 30<sup>th</sup> June 2022 (version 1)



## CHECKUP SOIL ANALYSIS

Test codes to check the basics or to use as a base for adding additional tests.

Test Code	Cations check E90	P check E91	pH check E92	pH plus E93	Lime check E94	Lime plus E95	Sodicity check E96
Exchangeable Cations (Ca, K, Mg, Na, Al, CEC)	✓					✓	✓
pH (1:5 CaCl <sub>2</sub> )			✓				
pH (1:5 water) & pH (1:5 CaCl <sub>2</sub> )				✓	✓	✓	
Electrical Conductivity (1:5 water)				✓	✓	✓	
Buffer pH (lime rate to pH(water) 5.0, 6.0 & 6.5)					✓	✓	
Dispersion & Slaking (Loveday & Pyle)							✓
Phosphorus (Colwell)		✓					
Price (GST excl.)	\$18.50	\$18.00	\$16.00	\$18.00	\$31.50	\$40.00	\$26.50
Price (GST incl.)	\$20.35	\$19.80	\$17.60	\$19.80	\$34.65	\$44.00	\$29.15

## ADDITIONAL SOIL TEST OPTIONS

Additional tests may be requested in conjunction to packaged or customised Test Codes. Include additional tests when ordering, eg "E11 + Organic Carbon", or "E82 + HEALTH1 + SANSILCLAY2", or request a quote for a customised Test Code.

**Individual tests requested without a Test Code will incur a submission & sample preparation fee of \$10 per sample.**

SOIL HEALTH TESTING (add to existing soil Test Codes)	Add-on Code	Price GST excl.	Price GST incl.
The HEALTH1 add-on package conveniently adds 4 soil health indicator tests:			
<ul style="list-style-type: none"> <li>Labile (Active) Carbon (0.033M KMnO<sub>4</sub>)</li> <li>Total Carbon &amp; Total Nitrogen, C:N ratio (Combustion)</li> <li>Dispersion &amp; Slaking (Loveday &amp; Pyle, Index 1 to 16)</li> <li>Solvita<sup>®</sup> CO<sub>2</sub> Burst (carbon dioxide released from soil due to biological activity)</li> </ul>	HEALTH1	\$70.00	\$77.00

SOIL NUTRIENT TESTS (add to existing soil Test Codes)	Rayment & Lyons method or Add-on Code	Price GST excl.	Price GST incl.
Ammonium, Nitrate & Chloride	7C2b,7C2b,5A2b	\$8.00	\$8.80
Boron (Hot CaCl <sub>2</sub> )	12C2	\$8.50	\$9.35
Calcium Carbonate Percentage (% CaCO <sub>3</sub> equivalent)	19A1	\$8.00	\$8.80
Electrical Conductivity & pH (1:5 water & CaCl <sub>2</sub> )	3A1,4A1,4B4	\$8.00	\$8.80
Extractable Aluminium (CaCl <sub>2</sub> )	ICP29	\$8.00	\$8.80
Exchangeable Aluminium (KCl)	15G1	\$8.50	\$9.35
Exchangeable Cations: Calcium, Magnesium, Potassium, Sodium (Ammonium Acetate) & Aluminium (KCl)	15D3,15G1	\$8.50	\$9.35
Exchangeable Cations - Calcium, Magnesium, Potassium, Sodium (Ammonium Acetate, with soluble salt pre-treatment)	15D1	\$30.00	\$33.00
Exchangeable Cations - Calcium, Magnesium, Potassium, Sodium (Alcoholic NH <sub>4</sub> Cl at pH 8.5, with soluble salt pre-treatment, Tucker)	15C1	\$30.00	\$33.00
Exchangeable Cations - Calcium, Magnesium, Potassium, Sodium, Aluminium (BaCl <sub>2</sub> /NH <sub>4</sub> Cl, Gillman & Sumpter)	15E1	\$8.50	\$9.35
Labile (Active) Carbon (0.033M KMnO <sub>4</sub> )	6E1	\$12.00	\$13.20
Mehlich 3 extractable elements: P, Ca, Mg, Na, K, Cu, Fe, Mn, Zn, B, S, Al	18F1	\$8.50	\$9.35
Organic Carbon (Walkley & Black)	6A1	\$8.50	\$9.35

# Nutrient Advantage Price List

1<sup>st</sup> September 2021 to 30<sup>th</sup> June 2022 (version 1)



SOIL NUTRIENT TESTS (add to existing soil Test Codes)	Rayment & Lyons method or Add-on Code	Price GST excl.	Price GST incl.
pH (1:5 CaCl <sub>2</sub> )	4B3	\$6.00	\$6.60
pH (1:5 water & CaCl <sub>2</sub> ) & Electrical Conductivity (1:5 water)	4A1,4B4,3A1	\$8.00	\$8.80
pH Buffer (Mehlich single buffer. Reports lime rates to pH(water) 5.5, 6.0 and 6.5)	16C1	\$13.50	\$14.85
Phosphorus Buffer Index, PBI (requires Phosphorus Colwell test)	9I2b	\$8.00	\$8.80
Phosphorus (Bray I)	9E2	\$8.00	\$8.80
Phosphorus (Bray II)	BRAYP2	\$8.00	\$8.80
Phosphorus & Silicon (BSES, H <sub>2</sub> SO <sub>4</sub> )	9G2,13D1	\$8.00	\$8.80
Phosphorus (DGT)	DGTP	\$18.00	\$19.80
Phosphorus (Olsen)	9C2b	\$8.00	\$8.80
Phosphorus (Colwell)	9B2	\$8.00	\$8.80
Phosphorus & Potassium (Colwell)	9B2,18A1	\$11.00	\$12.10
Potassium (Colwell)	18A1	\$8.00	\$8.80
Potassium (Nitric)	18C1	\$8.00	\$8.80
Potassium (Skene)	SKENEK	\$8.00	\$8.80
Potentially Mineralisable Nitrogen, PMN (also requires Moisture test. 10 day TAT)	7D2b	\$16.00	\$17.60
Saturated Extract: Electrical Conductivity	14B1	\$12.00	\$13.20
Saturated Extract: Calcium, Magnesium, Sodium, Potassium, Sulphur, Phosphorus	14F1	\$12.00	\$13.20
Silicon & Phosphorus (BSES, H <sub>2</sub> SO <sub>4</sub> )	13D1,9G2	\$8.00	\$8.80
Silicon (CaCl <sub>2</sub> )	BSESSI	\$5.00	\$5.50
Sulphur (KCl 40°C)	10D1	\$8.00	\$8.80
Sulphur (MCP)	10B3	\$8.00	\$8.80
Total Nitrogen (Kjeldahl)	7A2	\$13.00	\$14.30
Total Nitrogen (Combustion)	7A5	\$13.00	\$14.30
Total Carbon (Combustion)	6B2b	\$13.00	\$14.30
Total Carbon & Total Nitrogen, C:N ratio (Combustion)	6B2b,7A5	\$18.00	\$19.80
Total Organic Carbon (Heanes)	6B1	\$13.00	\$14.30
Total P, Al, Ca, Cu, Fe, K, Mg, Mn, Na, Ni, S, Zn (acid digestion, ICPOES)	17B1	\$16.00	\$17.60
Total Trace As, Cd, Cr, Co, Mo, Pb, Se, V (acid digestion, ICPMS)	17B1trace	\$28.00	\$30.80
Trace Elements: Copper, Iron, Manganese, Zinc (DTPA extraction)	12A1	\$8.00	\$8.80
Zinc (HCl extraction)	12D1	\$8.00	\$8.80

SOIL BIOLOGICAL INDICATOR TESTS (add to existing soil Test Codes)	Add-on Code	Price GST excl.	Price GST incl.
Solvita CO <sub>2</sub> Burst (carbon dioxide released from soil due to biological activity)	CO2_BURST	\$32.00	\$35.20
Total Coliforms and E. Coli (MPN)	WCOLIF_TE	\$35.00	\$38.50
Faecal Coliforms (Thermotolerant, MPN)	WCOLIF_F	\$35.00	\$38.50

SOIL PHYSICAL PROPERTY TESTS (add to existing soil Test Codes)	Add-on Code	Price GST excl.	Price GST incl.
Dispersion & Slaking (Loveday & Pyle, Index 1 to 16)	PHYS2	\$8.00	\$8.80
Dispersion (Emerson Aggregate test, EAT, Classes 1 to 8)	EMERSON	\$16.00	\$17.60
Moisture (at 105°C)	MOIST	\$4.00	\$4.40
%Gravel	GRAVEL	\$6.00	\$6.60
%Sand, %Silt, %Clay (Hydrometer) & Texture	SANSILCLAY2	\$16.00	\$17.60
%Coarse Sand, %Fine Sand, %Silt, %Clay (Hydrometer & wet sieve) & Texture	SANSILCLAY	\$20.00	\$22.00
Texture (Northcote field technique) and Soil Colour	PHYS1	\$8.00	\$8.80